



Press folder



# BHM (Berl Hörgeräte Manufaktur)

## Specialist for hearing systems „Made in Austria“

### Nice to hear You again

... is the slogan of BHM, and it conveys the philosophy of this innovative company. The name BHM (Berl Hörgeräte Manufaktur) is synonymous with success; a story that began back in 2002 with the manufacture of hearing aid replacement parts.

BHM develops high-quality hearing systems that are manufactured exclusively in Austria and distributed around the world.

The core competence of BHM lies in the development and manufacture of special bone conduction hearing systems and bone conduction receivers for a wide variety of applications. These offer wearers great advantages compared to other systems, for example in the form of hearing glasses. BHM also manufactures components and prototype groups for hearing implants and prosthesis parts entirely in line with the latest technologies.

### Looking for greater quality of life? We hear you loud and clear.

Being able to enjoy the world using all of our senses is a fundamental aspect of true quality of life. Those who experience limited hearing understand this only too well.

BHM has set itself a challenging goal: to help those with a hearing impairment regain a significant quality of life, thus restoring their freedom. Innovative hearing systems by BHM – the new dimension in aesthetics, quality and reliability.

As a pioneer in the field of hearing aid devices and precision parts destined for the medical/technical field, the BHM manufactory has spent many years developing and producing highly advanced micro components. Its wealth of experience and commitment to perfection make BHM a globally respected specialist in bone and air conduction hearing aids.

Expansion of the company soon followed with the purchase of Coselgi manufacturing rights for hearing glasses, in order to ensure a comprehensive service for these clients as well. Naturally, BHM devices are checked and tested to the highest standard and are ISO 13485 certified. Grant applications can be made to local health insurance companies throughout almost all of Europe.



## The idea behind BHM hearing glasses

### Bone conduction hearing aids ... How do they work?

The bone conduction hearing aid is a hearing system based on the principle of sound transmission to the inner ear through the skull. Instead of sound, these hearing systems typically generate vibrations.

For people who, for example, are not keen on having something positioned in their outer ear (or cannot tolerate this), whose middle ear doesn't let the sound through or whose ear weeps too much, a bone conduction hearing aid is ideal. It is positioned on the cranial bone behind the ear. From there, the vibrations reach the inner ear directly.

The glasses frame elegantly conceals microphone and electronics, simultaneously ensuring that the hearing aid is positioned in the right spot and can emit the corresponding vibrations.

### Air conduction hearing aids ... How do they work?

In an air conduction hearing aid, sound is transferred on the eardrum. The microphone in the hearing aid transforms sound waves into electrical impulses. Depending on the kind of hearing loss the individual experiences, these signals are amplified and transferred to a loudspeaker-receiver, which supplies the eardrum with this amplified sound. From there, the sound waves reach the inner ear via the middle ear. There, the sound is converted and transferred to the acoustic nerve.

Modern hearing aids are not only able to transfer sound louder overall. They can also "intelligently" differentiate and filter tones in order to transfer them at varying levels of amplification.

These days, high-quality hearing aids have two or more microphones to pick up and process sound from various directions. These directional microphones can be redirected as required, for example so that sound is only picked up from behind or from the front – ideal for conversations in a noisy environment.







## Enjoy hearing with spectacles

Hearing glasses based on bone or air conduction technology provide a solution for those who require both visual and auditory assistance.

## pan – the BTE system for your individual pair of glasses

### As individual as you are

As an air conduction hearing aid, **pan** is an aesthetic system that captures sound via two directional microphones and transfers it to the ear through a small loudspeaker. It is easy to integrate into any pair of glasses. The experts at BHM have created an innovative product that is not discernible as a hearing aid, thus setting completely new standards in terms of innovation and sophisticated technology.

Maximum choice – the utmost satisfaction. Today, a pair of glasses is more than just a visual aid: as a fashion accessory, it is, in addition to providing a great fit and excellent vision, an expression of your personality and lifestyle. So it's good to see how **pan** has made it possible to integrate a hearing aid into your glasses for the first time, in a way that provides the best hearing quality without attracting any attention. Regardless of whether you would like to keep using your existing glasses, or prefer to opt for a new pair entirely.

### Just change it

**pan** fits flexibly to any glasses; therefore it does not need a new one. The optician or acoustician can simply attach **pan** to any existing model.

### Perfect hearing experience even with ambient noise

**pan** offers sensational directional sensitivity thanks to two microphones positioned in front of the ear.

All advantages at a glance:

- Quality product „Made in Austria“
- Easy to switch – fits flexibly to your glasses
- Two medical devices in one pair of spectacles
- Precise directional sensitivity
- CROS/BiCROS on request
- Also provides support in the treatment of tinnitus

Easy to switch –  
fits flexibly to  
your glasses



## BHM bone conduction hearing spectacles

BHM offers bone conduction hearing glasses which combine excellent sound quality with the highest degree of comfort – without any risk of surgery.



**AN-Evo1 – the world's first digitally programmable bone conduction hearing glasses**

See better, understand better. The bone conduction hearing glasses **AN-Evo1** combines excellent sound quality with the highest level of comfort. **AN-Evo1** provides reliable assistance for both conductive and combined hearing impairment in an elegant and highly effective manner. The large range of fashionable fronts means that you can be sure of an attractive appearance as well as an unobtrusive hearing aid.



**contact star evo1 – the world's first digital bone conduction hearing glasses adjusted with In-Situ audiometry**

The **contact star evo1** is fully programmable. These hearing glasses can be adapted to each respective wearer by means of In-Situ audiometry. And all this with a wide range of BHM frame fronts that integrate this highly precise bone conduction hearing aid discreetly in the temples.



In-Situ function

Sound Dynamix  
(BHM Automatic )



# Hearing – an essential aspect of good quality of life!

BHM bone conduction glasses are not only known for how comfortable they are to wear; they are also reliable, precise, and ensure that you can hear comprehensively – tailored to each person's individual requirements.



## contact mini – the perfect digital bone conduction hearing system for children.

And adults can benefit too!

**contact mini** offers optimum auditory provision with total freedom of movement – and opens up a whole new world of impressions and discoveries for your child!

In order to provide timely and adequate assistance to children with a hearing impairment, BHM has developed the **contact mini** as the world's first digital miniature bone conduction system. Particularly for children, swift intervention with acoustic support is highly recommended as speech development is inextricably linked with the ability to hear. Hearing-impaired adults who enjoy playing sport and getting active will also find the **contact mini** extremely useful.

As an alternative to surgical solutions, the **contact mini** can be worn in a variety of ways – no surgery necessary. Children with impaired hearing often cannot have

surgery, or this approach is simply not recommended due to their young age. However, the time until such intervention can take place is precious and should be put to the best possible use. Ultimately, good hearing is indispensable for a straightforward everyday life, particularly at kindergarten, school or in lessons.

The miniature bone conduction hearing aid consists of an electronic casing with a bone-conduction receiver. It transmits sound through direct contact with the head, where it is transformed into a nerve impulse in the inner ear.

**contact mini** can be incorporated easily and discreetly into a wide range of hair bands and headpieces.

No surgery risk!

Sound Dynamix  
(BHM Automatic )







Life is easy.  
contact forte.

**contact forte** can ...  
bring a smile to your face, overcome obstacles,  
cross boundaries, open up the senses, embolden you,  
create trust, fill you with confidence, change your life.

## contact forte – the ultimate high-end hearing system

Optimum hearing is yours, thanks to **contact forte's** leading-edge technology, everyday practicality and highly comfortable fit for all ages. Live everyday life effortlessly with the world's most modern, robust and flexible digital hearing system and its numerous key functions.

Babies and small children will benefit from **contact forte** just as much as adults. Hearing is indispensable for language acquisition and for communicating with other people – that's why babies and children with a hearing impairment in particular need swift action.

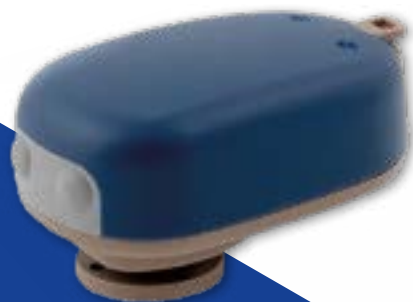
This is where **contact forte** steps in: **contact forte's** unique technology provides people of any age with excellent hearing.

**contact forte** is a digital, miniature bone conduction hearing system which compensates for mild to moderate hearing impairment, processing sound and then transmitting it to the inner ear. There are a number of wearing options. The option to wear **contact forte** with a magnetic implant is currently in the process of clinical evaluation. It's an innovation that gives users full freedom of movement and unlimited hearing in any life situation.

The entire **contact forte** hearing system is housed in a single casing. This means no external cable connections, ensuring easy handling and a system that is particularly robust and compact. Thanks to its solid workmanship, this device is dust-protected and protected against splash water.

So there's nothing standing in the way of any sporting or recreational activity, thanks to **contact forte**. **contact forte** also proves its mettle as a high-end hearing system from a technical perspective. It can be linked to electronic devices via Bluetooth. In addition, BHM has optimised the bone conduction receiver components, now offering a wider frequency spectrum.

**contact forte** thus offers outstanding hearing with full freedom of movement. Live life to the full, thanks to **contact forte**. Learn languages, discover the sandpit, sit on a swing, stroll through the park, enjoy time alone with your significant other, visit cities, hang out with friends, experience the beauty of nature, work out, spend time with your nearest and dearest – you can do it all!



In-Situ audiometry  
is used to adjust  
the contact forte  
individually – for an  
optimum hearing  
experience!

## apollo – the most powerful hearing aid in the world

An elegant accessory that adapts to its owner's individual requirements in the blink of an eye. With **apollo**, BHM deliberately bucks the trend to make hearing aids even smaller and more fiddly. This all-rounder combines a stylish, modern design with a virtually universal range of possible applications – and it is very easy to use.

**apollo** can be used as a situation-related hearing aid, as well as a high-performance aid that can be adapted for both air and bone conduction.



### The freedom of hearing

The core of **apollo** is a latest-generation multi-channel audio processor that can be adapted via special software by your doctor or hearing aid specialist to suit your personal hearing requirements. When this happens, **apollo** proves beyond any doubt the scope of its individual action! Furthermore, the large operating elements – ergonomic volume control, an on/off switch as well as a handy visual battery warning – enable even young children or disabled people to operate their **apollo** themselves.

**apollo** effortlessly meets all the demands made of a high-performance hearing aid. It is the ideal companion wherever you go – at the theatre, at church or visiting a fair – thanks to its inductive signal. The user-friendly device is also fitted with a practical shirt clip and can therefore be attached quite easily to your shirt pocket, belt or even lanyard. The extra robust device thus provides maximum hands-free benefits at work or at school, at home or when travelling.



Direct, disturbance-free hearing thanks to an inductive signal.



## Viper 170P

The human ear hears „analogue“ – so why not your hearing aid?

Choose the **Viper 170P** for an unlimited sound experience and all-round comfort.

Using the **Viper 170P** we retain the natural qualities of sound. The beauty of tone isn't just a question of absolute loudness! Those experiencing hearing loss are often exposed to great challenges in everyday life. For that reason we suggest the BHM **Viper 170P** – a power analogue BTE aid featuring state-of-the-art technology and functions that facilitate an unlimited sound experience whilst also guaranteeing total comfort.



## BC-1 & BC-2LD

### Audiometric Bone Conductors

The **BC-1** and **BC-2LD** audiometric bone conductors are developed, fabricated and hand assembled by BHM. They are based on state-of-the-art bone conduction technology and specialist know-how from BHM. Ultra-sonic welding of the housing parts ensures special robustness and protection against environmental factors such as moisture and sweat.

A plastic headband complying with the audiometry standard comes with the **BC-1** and **BC-2LD** in the set. In addition, **BC-1** and **BC-2LD** are compatible with the existing metallic headband for audiometry.

Advantages at a glance:

- Meet the international audiometry standard
- **BC-1**: 2 meter long integrated cable
- **BC-2LD**: 2 meter long detachable cable (with plug connection)
- A plastic headband with rotatable clip (60 degrees) is available too




Reliable performance  
Outstanding quality  
High-end technology

## In-Situ audiometry for hearing systems – optimum hearing experience thanks to precise, tailored adjustment in real time

In-Situ adjustment for bone conduction hearing systems delivers optimum hearing results from the get-go. BHM offers In-Situ adjustment for the bone conduction hearing aids **contact star evo1**, **contact mini** and **contact forte**. In the audiogram, individual frequencies are "tapped in" using a keypad;

amplification is regulated using the cursor in such a way as to deliver optimum hearing for the customer. This hearing aid fitting is unique in its way, not only taking into account the characteristics of the hearing aid but also the anatomical features of each individual wearer.

## Bone conduction hearing systems with fully automated situation recognition Sound Dynamix (BHM Automatic )

BHM's fully automated Sound Dynamix (BHM Automatic ) situation recognition perfectly selects the most appropriate hearing system parameters in any environ-

ment. You can enjoy the best-possible sound in demanding situations without having to manually switch listening programs.

### NOISE ENVIRONMENT

Quiet environments



Speech in quiet environments



Speech in background noise



Music & movies



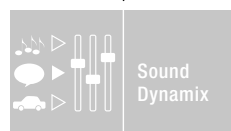
Background noise

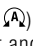


Wind noise



Sound Dynamix



Sound Dynamix (BHM Automatic ) automatically identifies the sound environment and adapts the hearing system features for optimal listening comfort.

Adaptive Algorithms



## Coselgi

The highest level of customer satisfaction – that's the principle that BHM lives by. And this applies no less to former Coselgi consumers who now have a new partner in the form of this top-quality Austrian firm. By purchasing Coselgi manufacturing rights for hearing glasses, BHM is now able to make meaningful synergistic use of its widespread expertise. BHM products are therefore compatible with Coselgi glasses, and Coselgi customers can now make full use of all services.

### Air conduction hearing spectacles:

Coselgi PLUS DIGIT (G1PP3)

>> **BHM-Upgrade with pan**



### Bone conduction hearing spectacles:

Coselgi B112 family

>> **BHM-Upgrade with AN-Evo1**

Coselgi B16 Eco

>> **BHM-Upgrade with contact star evo1**





## **BHM-Tech Produktionsgesellschaft mbH**

Located in: Grafenschachen 242, 7423 Grafenschachen, Austria

Phone: +43 (0)3359 20078 0

Fax: +43 (0)3359 20078 19

Email: [office@bhm-tech.at](mailto:office@bhm-tech.at)

[www.bhm-tech.at](http://www.bhm-tech.at)

Branche: Medical products

 [www.facebook.com/bhmtech](https://www.facebook.com/bhmtech)

---

## **Press contact**

**RABOLD UND CO. / Agentur für Kommunikation und Design**

Telefon: +43 (0)3352 20212

Email: [presse@ribold.at](mailto:presse@ribold.at)

[www.ribold.at](http://www.ribold.at)